

# SPECIFICATIONS

## PERFORMANCE

**Azimuth accuracy (RMS):** 0.17°  
**Azimuth accuracy (Typical):** 0.5°  
**Tilt and Roll accuracy:** 0.1°  
**Position accuracy:** 60 cm with SBAS  
**Start up time:** < 30 seconds

## CONNECTIVITY

Bluetooth  
Wi-Fi  
USB Cable  
Save an alignment on the tool

## PHYSICAL

**Smart Aligner Tool**  
*(US Patent No. 10,527,418)*

Dimensions: 19" x 4.5" x 3"  
(48.3 cm x 11.4 cm x 7.6 cm)  
Weight: 4 lb (1.8 kg)

**Universal Mounting Bracket**  
*(US Patent No. 8,436,779)*

Dimensions: 19" x 5" x 3"  
(48.3 cm x 12.7 cm x 7.6 cm)  
Weight: 4 lb (1.8 kg)

### Tool Bag

Heavy Duty Tool Bag with connection points for carrying the Smart Aligner Tool

### Ruggedized Carrying Case

Dimensions: 21" x 16" x 8.5"  
(53.3 cm x 40.6 cm x 21.6 cm)  
Weight: 12 lb (5.4 kg)

**TOTAL WEIGHT 20 lb (9.1 kg)**

## BATTERY

**Type:** Rechargeable lithium ion  
Operation time: >10 hrs (over 100 alignments)

**Battery charger:** AC wall charger and DC car charger

## ENVIRONMENTAL

**Operational temp:** -22°F to +158°F  
(-30°C to +70°C)  
**Sealing:** NEMA 4X, IP63  
**Shock/vibration:** IEC 68-2-27 / IEC 68-2-6  
**EMI:** FCC Part 15 Subpart B: 2008 and ICES-003:2004

## REPORTING

Smart Aligner App for Android and iOS  
Full closeout reports with up to 10 images  
**Formats:** PDF, CSV and JPEG (screenshot)  
Custom reports available



NOW AVAILABLE:  
BLUETOOTH  
CONNECTIVITY

# COMPACT. POWERFUL. SMART.



Smart <sup>(IoT)</sup> Aligner  
by MultiWave Sensors

LIKE NO OTHER ANTENNA ALIGNMENT TOOL

(905) 857-4481

MULTIWAVESENSORS.COM  
SALES@MULTIWAVESENSORS.COM

MultiWave Sensors



1. oDAS Small Cell Antenna
2. Microwave Dish Antenna
3. Ericsson AIR 5121 Antenna
4. RF Elements Symmetrical Horn
5. Ubiquiti airFiber Backhaul Antenna

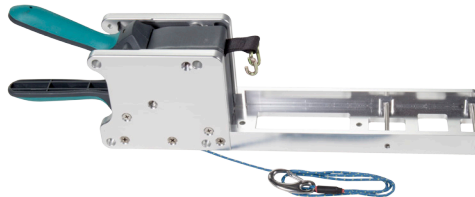
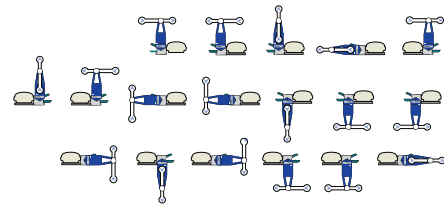


- Available Mounting Options**
- AIR21
  - AIR32
  - AIR1641
  - AIR5121
  - NOKIA FASB
  - RF Elements Horns
  - Cambium
  - Ubiquiti



## SMART CONFIGURATION

– 18 antenna mounting positions for the most demanding spatial and RF conditions



## SMART DESIGN

- Foldable GPS Antenna Alignment Tool
- Tool and Bracket fit into rugged carrying case
- Weighs only 8 pounds (Tool & Bracket)



# Smart Aligner

by SmartWave Sensors

The Smart Aligner is the smallest and most powerful Antenna Alignment Tool on the market. Compact design, exceptional performance, multiple configurations and smart phone enabled makes it the smartest choice for aligning your antennas. The incorporated GPS technology and sophisticated sensors automatically calculate Azimuth, Tilt, Roll, Location and AGL of an antenna under the most demanding conditions.



Carrying Case



Extra tall pouch included



Custom insert designs available for nearly all antenna varieties.

## SMART PHONE ENABLED

- Measure, verify and save alignment data using our free App
- Create and send PDF reports wirelessly from your mobile device
- Include up to ten photos for each antenna in the report
- Import and export site data directly to and from App
- Audible tone when alignment is achieved. Do not need to view the screen during alignment.

