

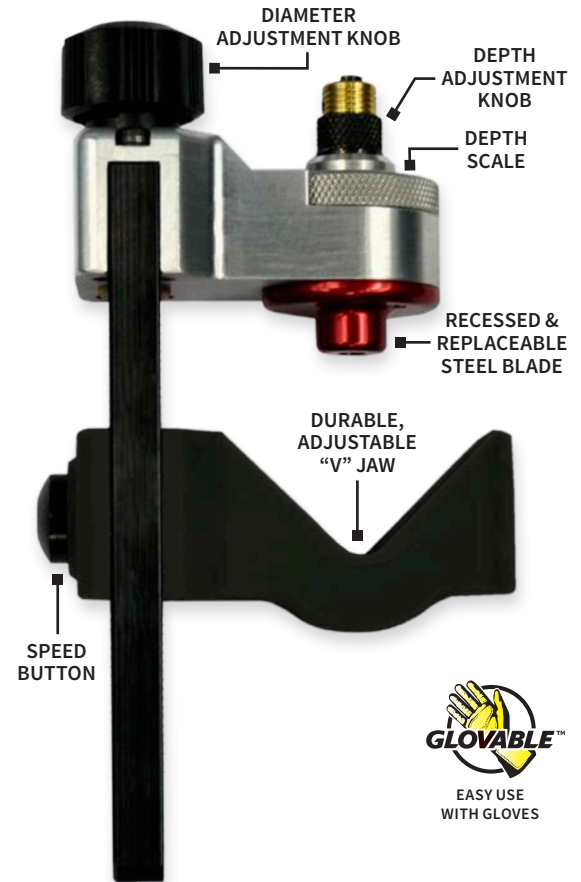
US15 Series

Large Format Cable Slitter

Introducing the new US15 Large Format Cable Slitter, a versatile tool capable of performing slit, ring, and spiral cuts on cable diameters from 10 to 60 mm. Equipped with a hardened steel blade, the tool provides fast, safe, and precise jacket removal from both hard and soft insulated cables without damaging the underlying layers.

Features

- Equipped with safe, recessed blade to prevent potential injury & blade damage
- Compatible with large telecom cables, large fiber optic ducts & various other large diameter power cables
- Easily adjust the blade position to perform ring, spiral & longitudinal cuts
- Quickly adjusts to suit hard & soft insulated cables with 0.39" to 2.36" (10 mm - 60 mm) diameters on cable ends & 0.39" to 1.96" (10 - 50 mm) on cable mid-spans
- Blade depth knob adjusts up to 0.177" (4.5 mm) in increments of 0.002" (0.05 mm) & features a convenient inch or metric scale for guaranteed precision
- Replaceable, machined & ground tool steel blade
- Reinforced diameter adjustment jaw is durable & travels on a threaded rod to provide precise stability between the blade & jacket



Compatibility

PART #	DESCRIPTION	CABLE DIAMETER(S)	JACKET TYPES	ADJUSTABLE BLADE DEPTH	LENGTH	WEIGHT
US15-7000	Large Format Cable Slitter (Metric Scale)	End: 0.39" to 2.36" (10 to 60 mm) Mid-Span: 0.39" to 1.96" (10 to 50 mm)	HDPE	0.177" (4.5 mm)	5.125" (130 mm)	8.82 oz (250 g)
US15-7001	Large Format Cable Slitter (Inch Scale)		PE PVC			
US15-7500	Replacement Blade	Rubber	N/A		N/A	



Quick-adjust jaw accepts hard & soft insulated cables ranging from 0.39" to 2.36" (10 mm to 60 mm).



Knobs are engineered with knurls & grooves for easy adjustment when wearing gloves



Recessed steel blade makes tool safe to carry & store.



Quickly & easily performs ring, spiral & longitudinal cuts.

Make Cable Preparation Easier

With Additional Ripley® Products



RCC

Ratchet Cable Cutter

- Easily cuts through copper, aluminum, solid & stranded conductors
- Not suitable for steel or ACSR cable
- Quick-release thumb lever enables user to halt operation & remove if necessary

MODEL	PART #	CABLE SIZE Ø
RCC	34925-2	Up to 1.75" Up to 44.45 mm

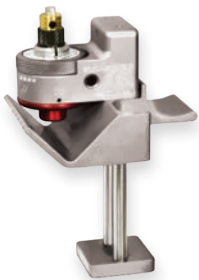


QC-2

Quick Cable Clamp

- Easy-to-use, heavy duty aluminum clamp quickly attaches to stop jacket stripping operations
- Convenient ratchet allows for relocation of handle position

MODEL	PART #	CABLE SIZE Ø
QC-2	43970	0.5" to 2.5" 12.7 to 63.5 mm



SCS

Semi-Con Scoring Tool

- Provides accurate semi-con scoring; capable of longitudinal & spiral cuts
- Precise & easily adjustable blade depths from 0" to 0.16" (0 to 4 mm) in increments of 0.002" (0.05 mm)
- Compact design for easy use & storage

MODEL	PART #	SCALE	CABLE SIZE Ø
SCS	43630	Customary	0.31" to 1.77"
SCS	43625	Metric	8 to 45 mm



WS 76

Semi-Con Shaving Tool

- Easily transitions between spiral shaving to cutting bevelled edges at 20°
- Accurately removes semi-con jacket within 0.984" (25 mm) & semi-con shield within 0.275" (7 mm)
- Precision blade adjusts in 0.004" (0.1 mm) increments

MODEL	PART #	CABLE SIZE Ø
WS 76	43580	0.71" to 2.36" 18 to 60 mm



RFNP Series

Flat Nose Pliers

- Comfortable, ergonomic & slip-free dual-compound thermoplastic grips
- 10⁶ to 10⁹ ohms/sq surface resistance per IEC 61340-5-4 for ESD workstations
- Drop-forged, hardened & tempered steel alloy for strength & longevity

MODEL	PART #	TYPE	LENGTH
RFNP-S	46475	Short Nose	5.1" (130 mm)
RFNP	46474	Long Nose	5.7" (145 mm)



US10 Series

15-35kV URD Chamfering Tool

- Size adjustment clamping system quickly & easily adjusts, then locks onto the insulation
- Chamfers 15 to 35 kV cable to 30° bevel, 0.15" (3.91 mm) in length
- Compact & ergonomic design with recessed blades to prevent injury
- Easily adjusts to accommodate XLPE, EPR & other cable insulations

MODEL	PART #	CABLE SIZE Ø
US10	US10-7000	0.55" to 2.36" 14 to 60 mm